



## **Belvedere.**

**Assembly kit  
for glass doors.  
Fitting for IDEA Base,  
Push and Bolt  
panic exit devices**

**Panic and emergency exit devices**



**DOUBLE SAFETY:  
NO PANIC,  
NO BACTERIA**



In line with its attention to safety, ISEO has decided to add this measure to a device which is always present in public environments and in all those places where hygiene and healthcare is a basic requirement: hospitals, clinics, treatment homes, but also child care centres and nursery schools.

Therefore, the panic function is enriched with the antibacterial protection, AntiGerm\*, whose performance is certified by Padova University Molecular Medicine Department.

The antibacterial treatment action is permanent and does not require special maintenance. The constant release of silver ions ensures top efficiency throughout the product life, even in case of surface scratches.

**\*Antibacterial protection for panic exit devices and accessories (except for Stainless steel/PVD finishes).**

**All ISEO panic and emergency exit devices with antibacterial coating AntiGerm have obtained the voluntary certification ICIM 021AW/0**





## Standard

### EN 1125:2008

All panic exit devices in compliance with standard EN 1125 are conceived to be used in panic situations.

The aim of the standard requirements is mainly to ensure a reliable and safe evacuation through a door making use of the minimum effort and with a single swing of the door, without any prior knowledge of the door device.





## How to read the marking **EN 1125:2008**

Not suitable for use on fire/smoke doors	3	7	6	0	1	4	2	2	A	A
Suitable for use on fire/smoke doors	3	7	6	B	1	4	2	2	A	A
	Category of use	Durability	Door mass	Suitability for use on fire/smoke resistant doors	People's safety	Corrosion resistance	Goods' security	Bar projection	Type of bar operation	Field of door application

**Category of use.** There is only one category which refers to a high frequency of use where there is little incentive to exercise care, i. e. where there is a chance of an accident and misuse.

**Durability.** There are two grades of durability:  
 grade 6 = 100,000 operations  
 grade 7 = 200,000 operations

**Door mass.** There are three door mass categories:  
 grade 5 = up to 100 kg  
 grade 6 = up to 200 kg  
 grade 7 = over 200 kg

**Suitability for use on fire/smoke resistant doors.** There are three fire/smoke resistance categories:  
 grade 0 = not suitable for fire/smoke resistant doors  
 grade A = suitable for smoke resistant doors  
 grade B = suitable for fire/smoke resistant doors

**People's safety.** There is only one category representing the maximum grade, since panic exit devices must ensure people's safety.

**Corrosion resistance.** There are two categories as per prEN1670:  
 grade 3 = 96 h (high resistance)  
 grade 4 = 240 h (very high resistance)

**Goods' security.** Only one grade of security shall be used: the security requirements are secondary to those of safety.

**Bar projection.** There are two categories:  
 grade 1 = bar projection up to mm 150 (large projection)  
 grade 2 = bar projection up to mm 100 (standard projection)

**Type of bar operation.** There are two types of operations:  
 A = panic exit device with "push-bar" operation (Idea)  
 B = panic exit device with "touch-bar" operation (Push-Bar)

**Field of door application.** There are three categories:  
 A = single door, double door: active or inactive leaf  
 B = single door only  
 C = double door, inactive leaf only.

**For further information please refer to EN1125:2008 standard.**



**Warning**

The field of application of these panic exit devices is limited to following:

Maximum door mass	Maximum door height	Maximum door width	Temperature interval
200 Kg	2520 mm	1320 mm	-10°C +60°C

The limits indicated above are identified by EN1125 standard. ISEO Serrature declares that the performances of the devices and their accessories are in compliance with the requirements of the standard, for doors with mass max. 200 kg, height max. 3400 mm and width max. 1500 mm.

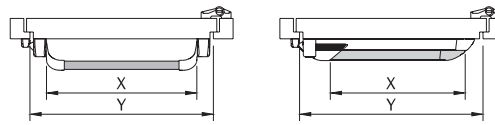


Fig. 1

The effective length (dimension X) of the bar shall be as near as possible to the effective width (dimension Y) of the door for which the device is intended, but never less than 60% (see Fig.1)  
 The door leavers and frames must be made of a material with sufficient rigidity to ensure that any distortions that occur during use can not exceed 5 mm in any position. The device must be fitted to the door leaf using materials that guarantee a tensile strength for each screw of >1,5KN.

**Products certifications**

ISEO Serrature has been awarded by Warrington Certification Limited (WCL) the certificate of conformity with EN 1125:08 standard allowing to apply the CE mark on panic exit devices, compulsory from 01/04/2003.  
 Idea panic exit devices have already obtained the Voluntary Product Certification by an independent organisation, ICIM, as provided for in EN 1125:08.  
 The ICIM voluntary certification establishes stricter requirements than the CE mark.

All the updated certificates can be downloaded from our web site: [www.iseoserrature.it](http://www.iseoserrature.it)

Example of product certification

**warrington certification**  
 EC CERTIFICATE OF CONFORMITY  
 Number: 1121 - CPD - AAA006

In compliance with Directive 89/106/EEC of the Council of European Communities of 21 December 1988 on the approximation of laws, regulations and administrative provisions of the Member States relating to construction products (Construction Products Directive - CPD), amended by the Directive 93/68/EEC of the Council of European Communities of 22 July 1993, it is confirmed that the following products are subject to factory production control procedures and are submitted by the manufacturer to further testing of samples taken at the factory in accordance with a prescribed test plan. The stated Notified Certification Body has performed the initial type-testing for the relevant characteristics of the product, has conducted the initial inspection of the factory and the factory production control, and is responsible for the continuous surveillance, assessment and approval of the factory production control.

Construction product: **Panic Exit Devices "IDEA" Series as detailed on pages 3 to 7**  
 Placed on the market by: **ISEO Serrature S.p.a.**  
 Company: **Via S. Girolamo 13, 25055 Pisogne (BS), Italy**  
 Address:

Product classification: **3 7 6 B\* 1 4 2 2 A A**  
 Intended use: **For use on fire rated single leaf and double leaf escape route doors**  
**3 7 6 A\* 1 4 2 2 A A**  
 Intended use: **For use on non-fire rated single leaf and double leaf escape route doors**

This document certifies that all the provisions concerning the attestation of conformity and product performance described in Annex ZA of the product standard

**BS EN 1125 : 2008**

were applied and that the product fulfils all the prescribed requirements.

Notified Certification Body: **Warrington Certification Ltd** EC Reference Number: **1121**

This certificate was first issued on **02/07/2009** and remains valid as long as the conditions laid down in the harmonised technical specification above, or the product design, or the manufacturing conditions in the factory, or the FPC itself are not modified significantly, or at the latest **01/07/2014**.

**CE** Manager - Warrington Certification Ltd.

References:  
 Mechanical test evidence: **ICIM 51/08, 52/08, 53/08, 54/08, 55/08, 57/08, 59/08** Fire test evidence: **Institute Giordano 161718**  
 Factory references: **F01** Classification report:

**ACCREDIA**  
 CERTIFICAZIONE DI PRODOTTO  
 PRODUCT CERTIFICATION

**ICIM**

CERTIFICATO N° **077AD/2**  
 CERTIFICATE N°

PER LA CONCESSIONE DEL DIRITTO D'USO DEL MARCHIO DI CONFORMITÀ ICIM / FOR THE AUTHORISATION TO USE ICIM MARK OF CONFORMITY  
 ALL'AZIENDA / TO THE FIRM

**ISEO SERRATURE S.p.a.**  
 Via San Girolamo, 13  
 PISOONE (BS) ITALY  
 UNITA' OPERATIVE / OPERATIVES UNITS

PER I SEGUENTI PRODOTTI / FOR THE FOLLOWING PRODUCTS  
**DISPOSITIVI ANTIPANICO PER USCITE DI SICUREZZA AZIONATI MEDIANTE UNA BARRA ORIZZONTALE PANIC EXIT DEVICES**

CON DENOMINAZIONE COMMERCIALE / WITH TRADE NAME/S

Serie IDEA-PUSH con scrocco in acciaio mod.I 9421084\*\*T, 9422084\*\*T, 9423084\*\*T, 9424084\*\*T, 942117\*\*T, 942217\*\*T, 942317\*\*T, 942417\*\*T, 9424130\*\*T  
 kit IDEA-PUSH con scrocco in acciaio mod.I 9425084\*\*T, 9426084\*\*T, 9427084\*\*T, 9428084\*\*T, 9429084\*\*T

Serie IDEA-PUSH-BOLT con scrocco in acciaio mod.I 9452084\*\*4, 9453084\*\*4, 9452117\*\*4, 9453117\*\*4, 9452130\*\*4, 9453130\*\*4  
 kit IDEA-PUSH-BOLT scrocco in acciaio mod.I 9455084\*\*4, 9455117\*\*4

ACCESSORI mod.I 9410001\*\*04, 9410003\*\*04, 9410020, 9410030, 9410030\*, 9410040, 9410040\*, 9410011\*, 9410012\*, 9410014\*, 9410017\*, 9410040, 9410042, 9410042\*, 9410050, 9410052, 9410201\*\*04, 9410203\*\*04, 9410204\*\*04, 9430009\*, 9430012\*, 9430020\*, 9430030\*, 9400030, 9420069\*.

CONFORMITÀ ALLA NORMA ED AL DOCUMENTO NORMATIVO ICIM  
 IN COMPLIANCE WITH THE STANDARD AND WITH ICIM NORMATIVE DOCUMENT

**UNI EN 1125:08 - ICIM 70R010**

CON CLASSIFICAZIONE / WITH CLASSIFICATION  
**3 7 6 B 1 4 2 2 A A**

L'Azienda deve utilizzare il marchio di conformità ICIM in osservanza di Regolamento ICIM per la certificazione dei prodotti.  
 The firm shall use ICIM mark of conformity for the products according to ICIM Regulation for products certification.

Prima Emissione / First issue: **16/12/2004**  
 Emissione corrente / Current issue: **31/07/2012**  
 Data di scadenza / Expiring date: **15/12/2013**

**ICIM S.p.a.**

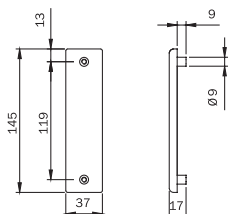
Code

Status  
Single  
package

Min. ord.



## Belvedere

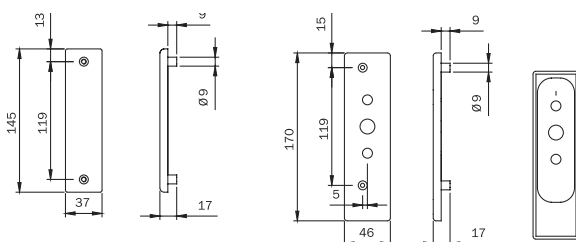


Assembly kit for glass doors. **FOR CENTRAL LOCK ASSEMBLY TYPE "A".**  
**WITHOUT EXTERNAL CONTROL.** Reversible. PVD finish cover plates,  
gaskets, fixing screws. Instructions.

**Can be used in conjunction with:**  
panic exit devices "IDEA Base"  
panic exit devices "IDEA Bolt"

94100506 C 1 - 1 NO

External right-hand



Assembly kit for glass doors. **FOR CENTRAL LOCK ASSEMBLY TYPE "A".**  
**CAN BE USED WITH EXTERNAL CONTROL FOR DOOR OPENING.**

PVD finish cover plates, gaskets, fixing screws. Instructions.

**Can be used in conjunction with:**  
panic exit devices "IDEA Base"  
panic exit devices "IDEA Bolt"

External control TRIM art. 94021002 - 94021005 - 94021025

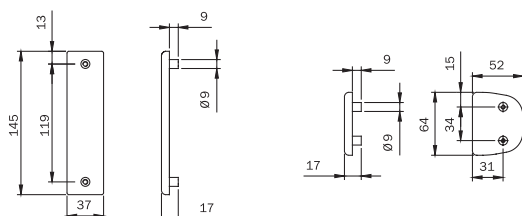
**EXTERNAL RIGHT-HAND**

94100516 C 1 - 1 NO

**EXTERNAL LEFT-HAND**

94100526 C 1 - 1 NO

External left-hand



Assembly kit for glass doors. **FOR CENTRAL LOCK ASSEMBLY TYPE "B".**

**WITHOUT EXTERNAL CONTROL. REVERSIBLE.** PVD finish cover plates, gaskets,  
fixing screws. Instructions.

**Can be used in conjunction with:**  
panic exit devices "Push"  
panic exit devices "Push Bolt"

94100536 D 1 - 1 NO

Code

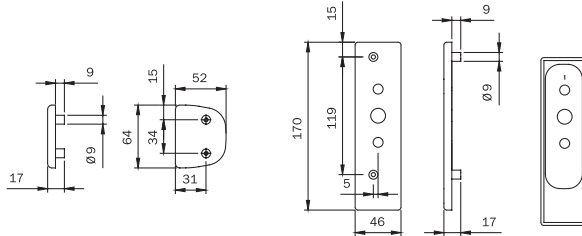
Status  
Single  
package

Min. ord.



**Belvedere**

External right-hand



Assembly kit for glass doors. **FOR CENTRAL LOCK ASSEMBLY TYPE "B"**.  
**CAN BE USED WITH EXTERNAL CONTROL FOR DOOR OPENING.** PVD finish cover plates,  
gaskets, fixing screws. Instructions.

**Can be used in conjunction with:**

panic exit devices "Push"

panic exit devices "Push Bolt"

External control TRIM art. 94021002 - 94021005 - 94021025

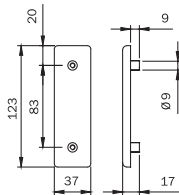
**EXTERNAL RIGHT-HAND**

**94100546** D 1 - 1 NO

**EXTERNAL LEFT-HAND**

**94100556** D 1 - 1 NO

External left-hand



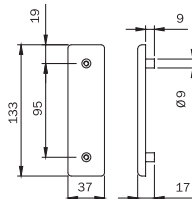
Assembly kit for glass doors. **FOR PAIR OF VERTICAL LATCHES "IDEA Base"**.

PVD finish cover plates, gaskets, fixing screws. Instructions.

**Can be used in conjunction with:**

Pair of vertical latches 94102015\*

**94100566** C 1 - 1 NO



Assembly kit for glass doors. **FOR PAIR OF LATERAL LATCHES "IDEA Base"**.

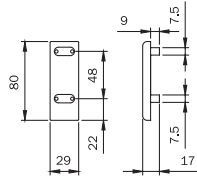
PVD finish cover plates, gaskets, fixing screws. Instructions.

**Can be used in conjunction with:**

Pair of lateral latches 94102035\*

**94100576** D 1 - 1 NO

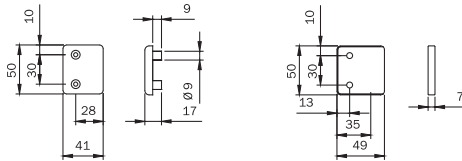
**Belvedere**



Assembly kit for glass doors. **FOR PAIR OF VERTICAL RODS "Bolt"**.  
PVD finish cover plates, gaskets, fixing screws. Instructions.

**Can be used in conjunction with:**

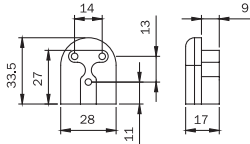
Panic exit devices IDEA Bolt - Push Bolt art. 943\* - 945\* **94100586** C 1 - 1 NO



Assembly kit for glass doors. **FOR LATERAL KEEP AND TOP VERTICAL KEEP**.  
PVD finish cover plates, gaskets, fixing screws. Instructions.

**Can be used in conjunction with:**

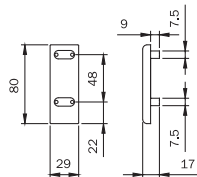
keeps art. 9410010\* - 9410011\* **94100596** C 1 - 1 NO



Assembly kit for glass doors. **FOR ADJUSTABLE TOP KEEP FOR PANIC EXIT DEVICES "Bolt"**.  
PVD finish cover plates, gaskets, fixing screws. Instructions.

**Can be used in conjunction with:**

Panic exit devices IDEA Bolt - Push Bolt- Pad Bolt **94100606** D 1 - 1 NO



Assembly kit for glass doors. **FOR RODS COVER EXTENSION**.  
PVD finish cover plates, gaskets, fixing screws. Templates. Instructions.

**Can be used in conjunction with:**

All rod and cover kits for door with maximum height of mm 3400 **94100636** D 1 - 1 NO



Kit of rod covering profiles  
for assembly on glass doors up to **mm 1047**

**94100616** C 1 - 1 NO



Application scheme for **IDEA Base** for single leaf glass doors

		WITH LATCHES										BOLT				
94100506																
94100516		▲	▲	▲	▲	▲	▲	▲	▲	▲	▲	▲	▲	▲	▲	▲
94100526																
94100566				●	●	●	●	●								
94100576									●	●	●	●				
94100586												●	●	●	●	●
94100596			●		●		●	●		●	●					●
94100606													●		●	●
94100616				●	●	●	●	●	●	●	●	●	●	●	●	●

- = Necessary items (● ● = 2 pcs, ● ● ● = 3 pcs)
- ▲ = Choose 1 kit according to the external control and the "hand" of door
- = Choose 2 kits according to the external control and the "hand" of door

**Application scheme for IDEA Base for double glass doors**

		WITH LATCHES						BOLT	
94100506									
94100516		■	■	■	■	■	■	■	■
94100526									
94100566		●	●	●	●	●	●		
94100576				●	●	●	●		
94100586								●	●
94100596		●	● ●	● ● ●	● ● ● ●	● ● ●	● ● ●	●	●
94100606									●
94100616		●	●	● ●	● ●	● ●	● ●	●	●

- = Necessary items (● ● = 2 pcs, ● ● ● = 3 pcs)
- ▲ = Choose 1 kit according to the external control and the "hand" of door
- = Choose 2 kits according to the external control and the "hand" of door

**Application scheme for "Push" for single leaf glass doors**

	WITH LATCHES										BOLT				
94100536															
94100546	▲	▲	▲	▲	▲	▲	▲	▲	▲	▲	▲	▲	▲	▲	▲
94100556															
94100566			●	●	●	●	●								
94100576								●	●	●	●				
94100586												●	●	●	●
94100596		●		●		●	●		●	●					●
94100606												●		●	●
94100616			●	●	●	●	●	●	●	●	●	●	●	●	●

- = Necessary items (● ● = 2 pcs, ● ● ● = 3 pcs)
- ▲ = Choose 1 kit according to the external control and the "hand" of door
- = Choose 2 kits according to the external control and the "hand" of door

Application scheme for **“Push”** for double glass doors

	WITH LATCHES						BOLT	
94100536								
94100546	■	■	■	■	■	■	■	■
94100556								
94100566	●	●	●	●	●	●		
94100576			●	●	●	●		
94100586							●	●
94100596	●	● ●	● ● ●	● ● ● ●	● ●	● ● ●	●	●
94100606								●
94100616	●	●	● ●	● ●	● ●	● ●	●	●

- = Necessary items (● ● = 2 pcs, ● ● ● = 3 pcs)
- ▲ = Choose 1 kit according to the external control and the “hand” of door
- = Choose 2 kits according to the external control and the “hand” of door

